



THE
SKYWRITER

Northwest Skyriders Newsletter

Website: www.nwskyriders.com

AMA Charter

#330

Editor: Bill Darkow (360) 273-0320

romodlr@comcast.net

October 2008

80mph **COMBAT**

and more is coming to

CHEHALIS AIRPORT

March 21-22

April 25-26

June 27-28

Aug. 1 (Air Fair)

Sept. 26

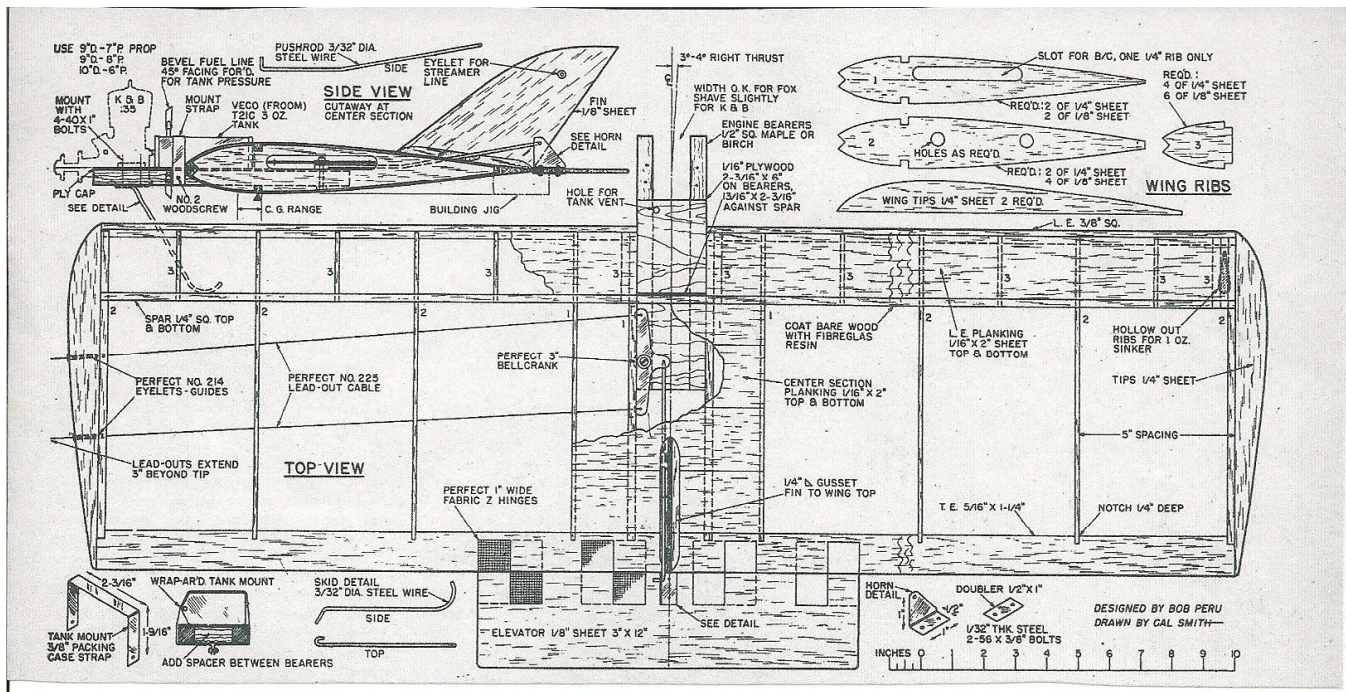
Oct. 31

2009 CHEHALIS CUP

CHAMPIONSHIP

SERIES





Model on the Cover

Is the "Fleetwon" from "American Modeler" magazine, February, 1959. Veteran combat flyers will recognize it as a rip-off of the popular "T-Square" of that era. Copies of the original construction article are available from your editor.

Your Best Bet for NW Control-Line News

Go to www.flyinglines.org for the latest and most complete coverage of what's happened, what's happening and what's going to happen in NW Control Line.

Get all the newest information on:

1. Chehalis Cup Combat Series
2. Carrier Postal Contest
3. NW Fun Fly & Contest schedule

and much, much more.

NW Skyraiders club meeting Thursday, Nov. 13th from 7pm-9pm at Auburn Masonic Lodge corner of Auburn Way & Main St.

Nominations, elections of officers.

Scheduling events for 2009

Planning Annual Banquet

Car Prowling at Kent's Riverview Park

Sad to report that Buzz Wilson and Ken Burdick's cars were broken into while they were flying at Riverview within an hour of their arrival. Thieves broke windows in three cars and stole whatever was available. Buzz lost his tool box, some hand tools, Nelson plugs and other special stuff.

The incident was reported to the Kent police.

Hard to accept that the parking situation dictates that we may have to consider posting a guard on our vehicles when flying there.

Kit Review: “Enterprise E” by BJM A Truly Challenging Building Project

If you enjoy the challenge of building a kit with no written and/or illustrated building instructions, incomplete and inaccurate plans where some of the laser-cut parts do not fit and some hardware is of the wrong size or not included, then try to build the “Enterprise E” electric-powered control line kit from BJM Enterprises.

Some specific problems are:

1. Top view of tail section shows wrong size control horn, wrong hinge line and wrong elevator width.
2. Wrong wing flap size (too short) and wrong flap/fuselage spacing shown. (2-1/4” on one view, 2-1/2” on another).
3. Wrong size laser-cut stab/elev. tips that do not match plan assembly drawings.
4. Wrong size spinner included. (2” instead of 1-1/2” as called for on plans).
5. Wrong prop included. (9x6 instead of 9x4-1/2 as called for on web site).
6. No hinges included in hardware package although they are shown on the plans.

Both your editor and new member Dane Covey bought “Enterprise E” kits from BJM and are struggling to complete them.

In spite of a stated Quality Policy that says “Satisfaction is guaranteed.” BJM has said he will replace only the wrong spinner and prop.

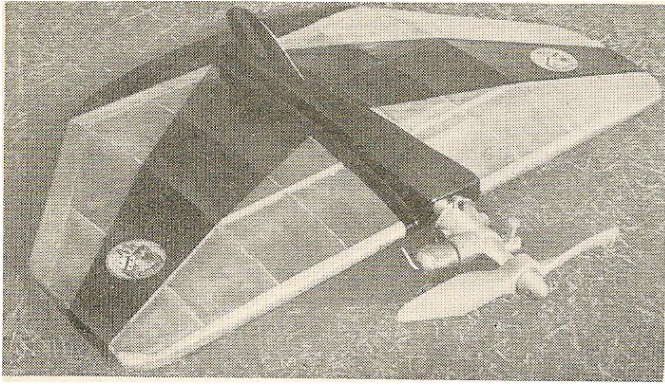
Although the kit is listed in John Brodak’s current catalog, he has stated that he does not intend to include it in his next catalog.

HANGAR 9 Presents New PT-19 C/L ARF

Some of you may have noticed an ad for a PT-19 C/L ARF on the back page of your latest (Nov. 2008) Model Aviation magazine.

For a more detailed description of the model, go to www.horizonhobby.com and type HAN0100 in the “Search” box in the upper right corner of the screen and click on the yellow “Go” button.

Verrrrrr-rr-ry interesting.



“UNLIMITED” - A 20in. span stunt wing from England. Published in the February, 1950 issue of Aeromodeller magazine.

New Triathlon Event for Greater Participation

Something else for the Contest Committee to consider for 2009:

Statistics show that only about 1/3 of our members participate regularly in contest flying. Last issue your editor proposed a multi-discipline event that might attract more of our sport flyers to participate in a low-key contest event. Here’s another, more specific, one.

It would build on the success of the “Flying Clown” event and would be limited to that design. Many of them have become “hangar queens” since Clown Racing has declined in popularity. It would also be limited to one low cost, readily available sport engine, such as the LA .15.

The Triathlon series would be:

1. Clown Racing – using the same rules except possibly 5 and 10-minute heats.
2. Old-Time Stunt – with prop and fuel tank change permitted. (The “Clown” is a legal Old-Time stunter).
3. Balloon Busting – using AMA or modified flight and scoring rules.

This event could be run concurrently with the Chehalis Cup series at the same site and on the same dates.

Flyers could participate in any one or all three events in the series and win awards in each event while accumulating points for awards at the end of the series.

Specific details as to rules and scoring could be worked out by the Contest Committee.

Executive Committee

President: Mike Potter 253-941-1753

skyshark@comcast.net

V.P./Webmaster:

Steve Helmick 425-255-1887

sbasser@yahoo.com

Sec’y./Treas.

Pete Ferguson 206-412-0393

pferg3@comcast.net

Member-at-Large:

Dave Gardner 425-235-5190

davegardner55@msn.com



UNLIMITED

DESIGNED BY
W. R. SMITH.

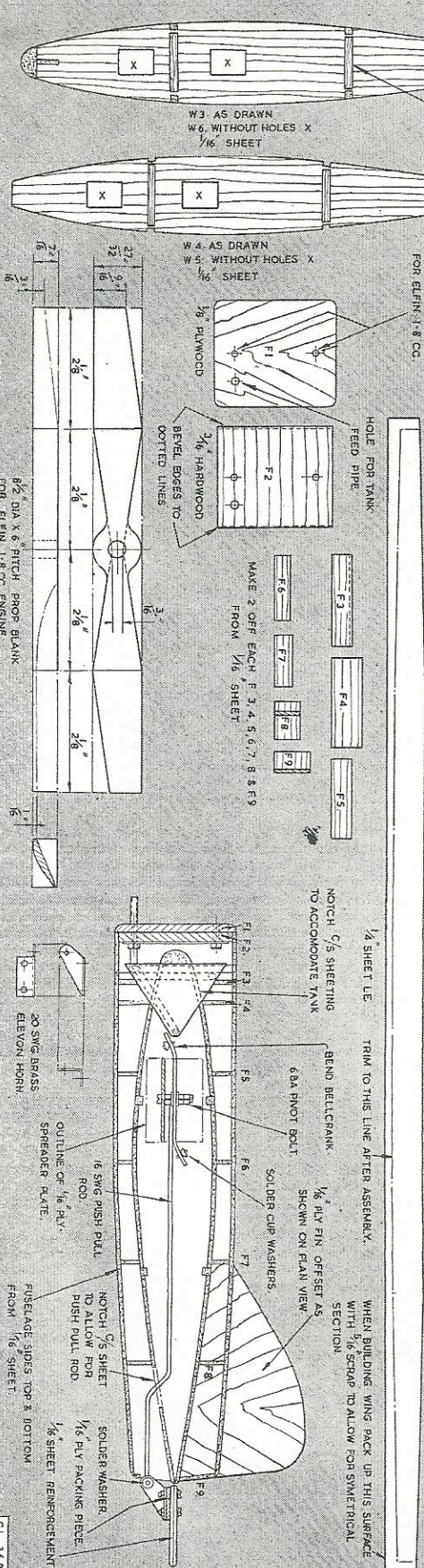
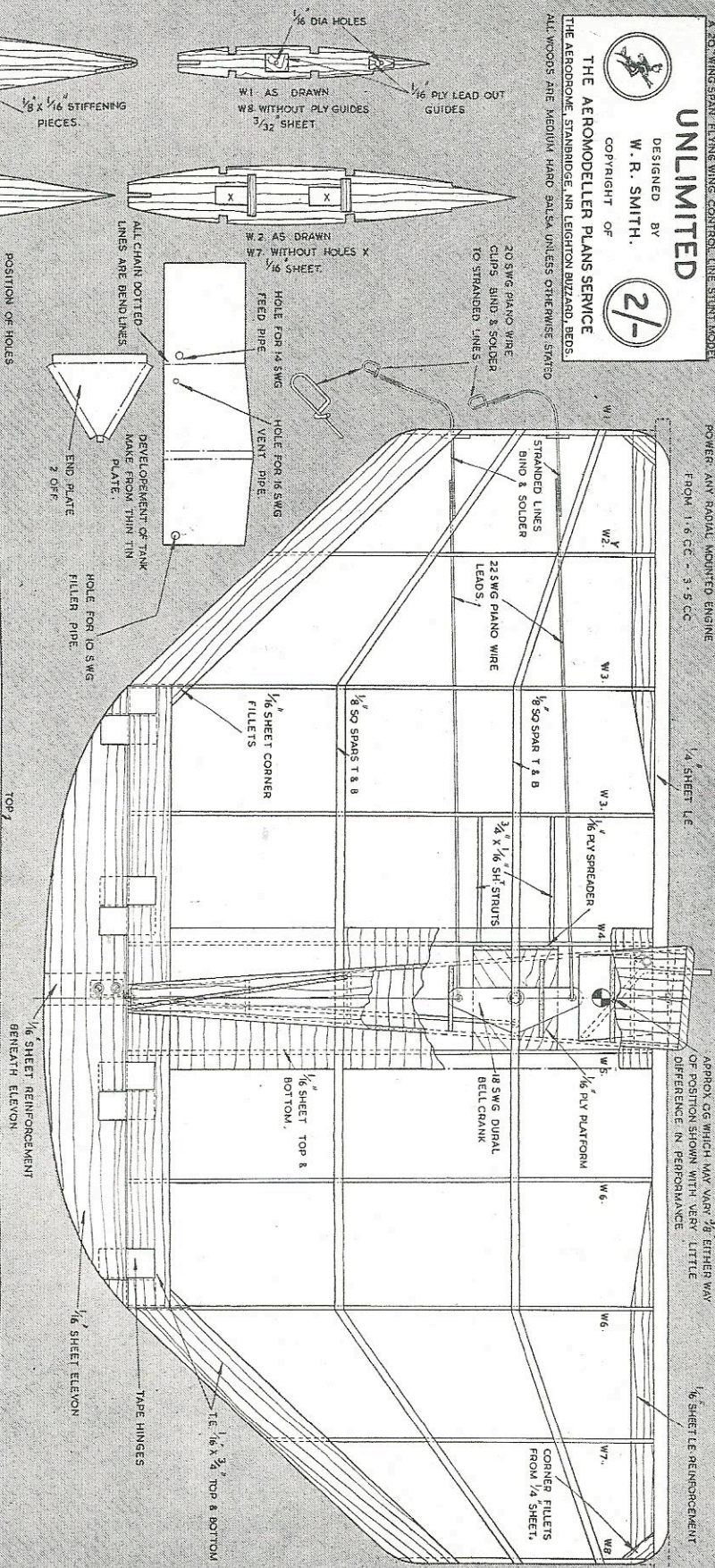


COPYRIGHT OF
THE AEROMODELLER PLANS SERVICE

ALL WOODS ARE MEDIUM HARD GRADES UNLESS OTHERWISE STATED

A 20" KINGSPAN FLYING WING CONTROL LINE STUNT MODEL

POWER: ANY RADIAL MOUNTED ENGINE
FROM 1.6 CC. - 3.5 CC.



APPROX. 0.6 WHICH MAY VARY 3/8 EITHER WAY
OF POSITION SHOWN WITH VERY LITTLE
DIFFERENCE IN PERFORMANCE

1/8" SHEET REINFORCEMENT
BENEATH ELEVON

1/2" SHEET LE
TRIM TO THIS LINE AFTER ASSEMBLY.

NOTCH 1/8" SHEETING
TO ACCOMMODATE TANK

WHEN BUILDING WING BACK UP THIS SURFACE
WITH 3/8" STRAP TO ALLOW FOR SYMMETRICAL
SECTION

1/8" PLY PIN OFFSET AS
SHOWN ON PLAN VIEW.

1/8" SWG PUSH PULL
ROD TO ALLOW FOR
PUSH PULL ROD.

1/8" SWG PUSH PULL
ROD TO ALLOW FOR
PUSH PULL ROD.

1/8" SWG PUSH PULL
ROD TO ALLOW FOR
PUSH PULL ROD.

1/8" SWG PUSH PULL
ROD TO ALLOW FOR
PUSH PULL ROD.

1/8" SWG PUSH PULL
ROD TO ALLOW FOR
PUSH PULL ROD.

The Northwest Skyraiders'
A N N U A L N W
C L U B S W A P M E E T

The Best Model Swap Meet of the Northwest!
Engines, Planes, Parts and Bits!
Saturday, December 6th, 2008: 9 AM - 1 PM
SETUP: Saturday Morning: 8:00 am – 9 am

WHERE?

Clover Park Tech College Aviation Center
17214 – 110th Avenue East
Puyallup, Washington 98374

To get to CPTCAC, take Hwy 512 to the Puyallup Meridian Exit, up to South Hill....and go South forever (!)...in a little over 4 miles, turn East at the light at 176th/Sunrise Turn left again at 110th Ave E. (approx ½ mile). Take the entrance to the left at the sign for Clover Park Technical College Aviation Center. The open hanger will be straight ahead through the open gate to the runways.

NO ENTRY FEE FOR BUYERS / SPECTATORS!

Table charge is \$5 each, Pay on site
No reserved tables: first come, first served!
Bring your stuff, lots of money and the usual BS to fill the morning!

for information, contact:

Mike Potter, skyshark58@comcast.net

Dave Gardner, davegardner55@msn.com (425-235-5190)

