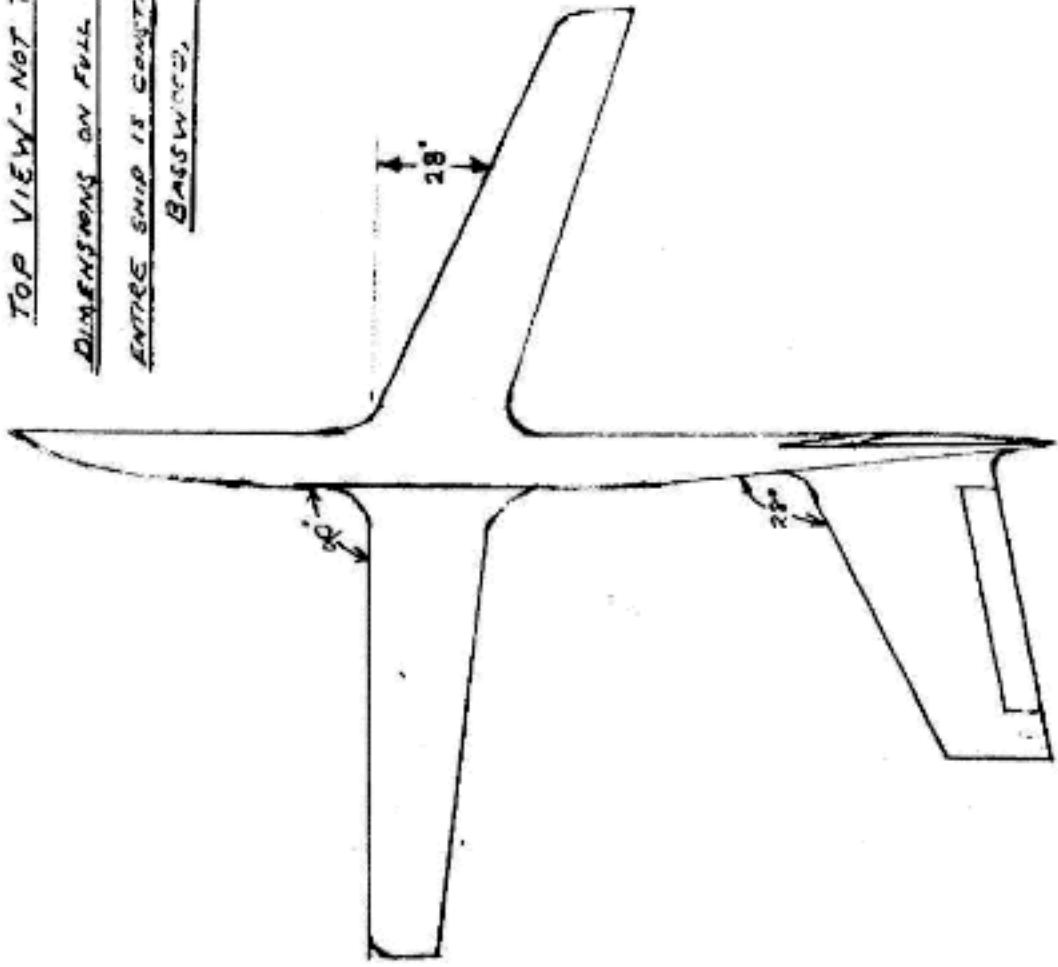


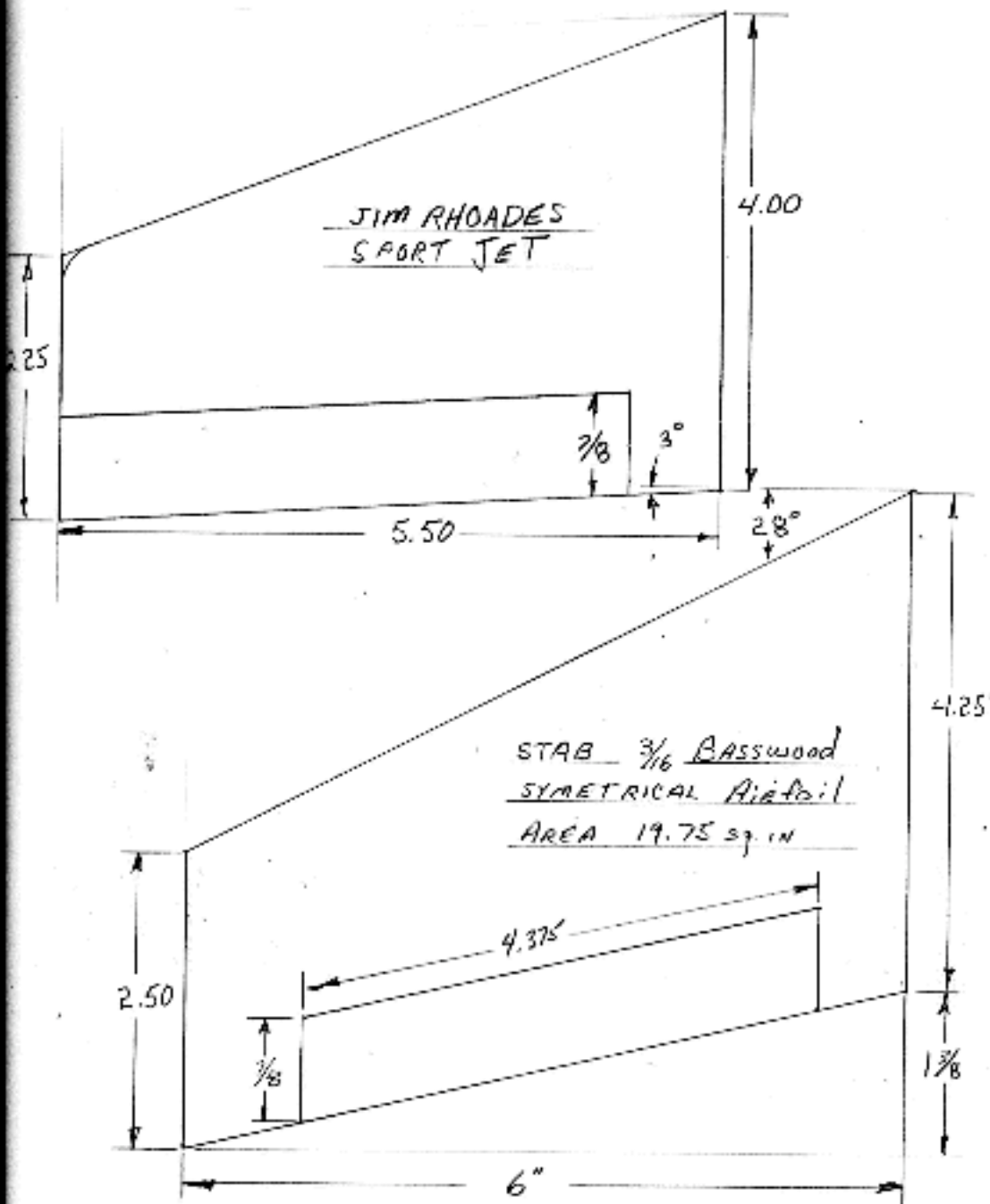
TOP VIEW - NOT TO SCALE

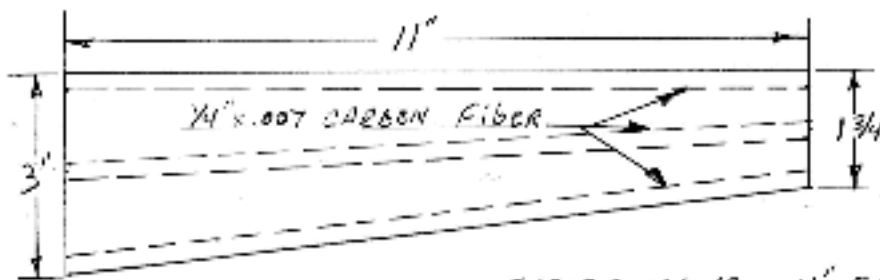
DIMENSIONS ON FULL SIZE SHEETS.

ENTIRE SHIP IS CONSTRUCTED OF

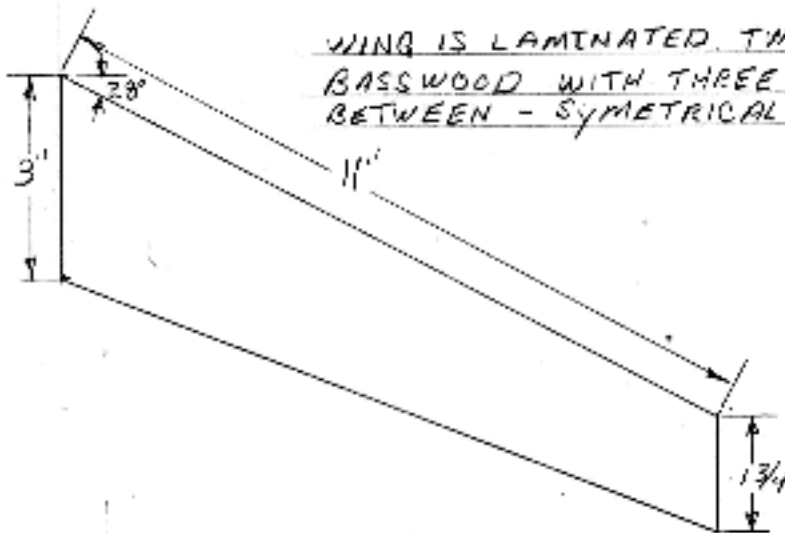
BASSWOOD.



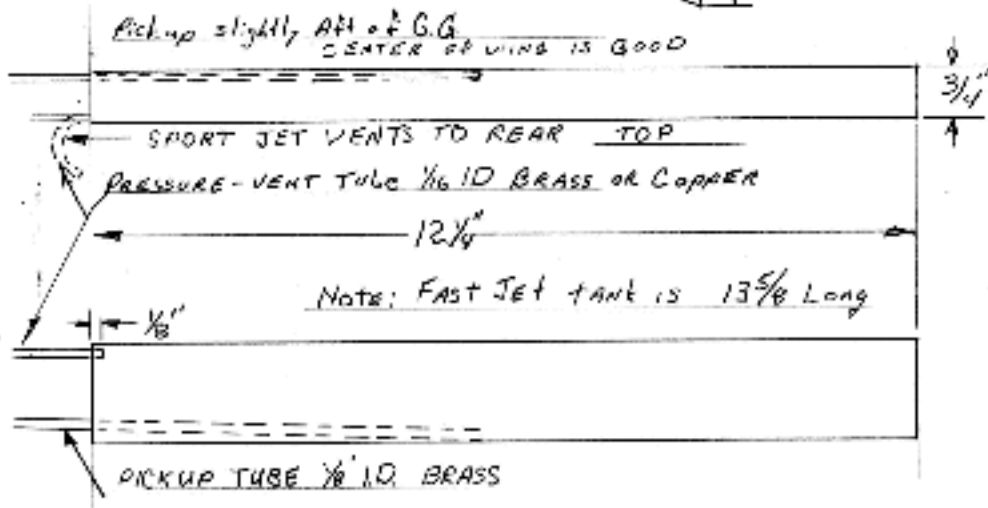




OUTSIDE + INSIDE WING 11' SPAN EACH
SAME CONSTRUCTION

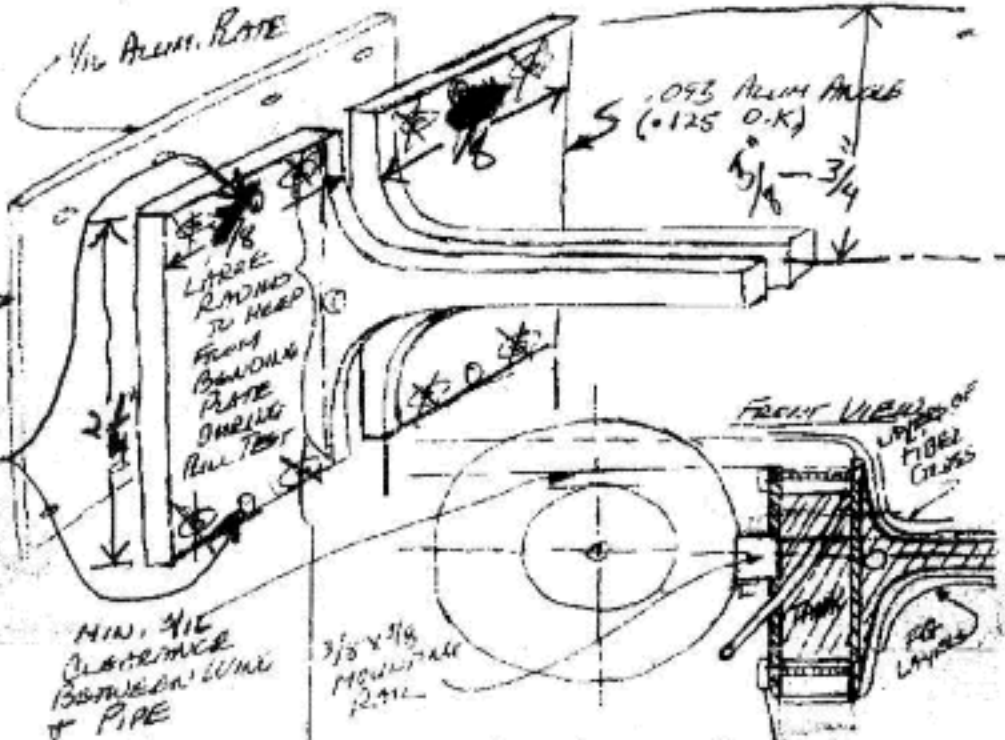


WING IS LAMINATED TWO 3/16 SHEETS
BASSWOOD WITH THREE 1/4" x .007 C.F.
BETWEEN - SYMMETRICAL AIRFOIL



INSIDE WING MUST BE ON THRUST LINE

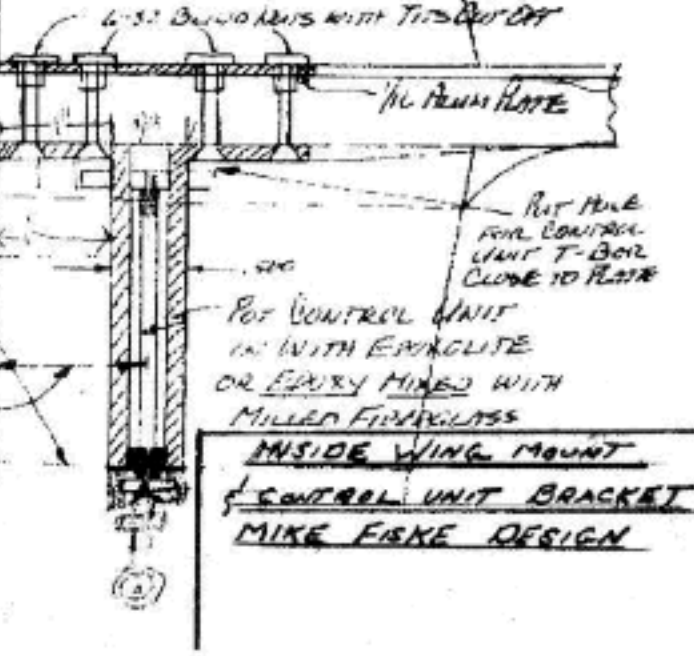
CAN USE THIS MATE: OVER ALL
 - JUST BUNG NUTS - Lenny
 ONLY 2 BOLTS
 SIDE ONE TOP
 ONE BOTTOM

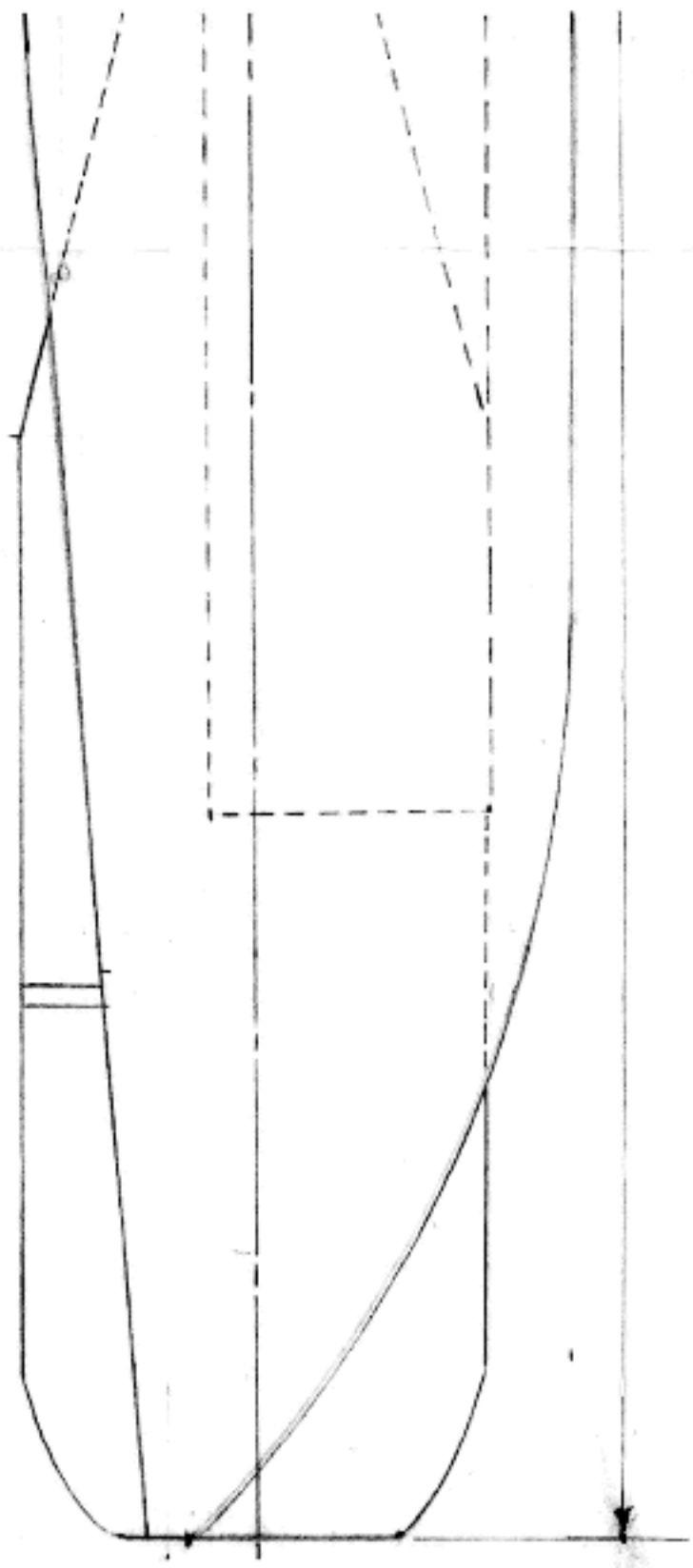


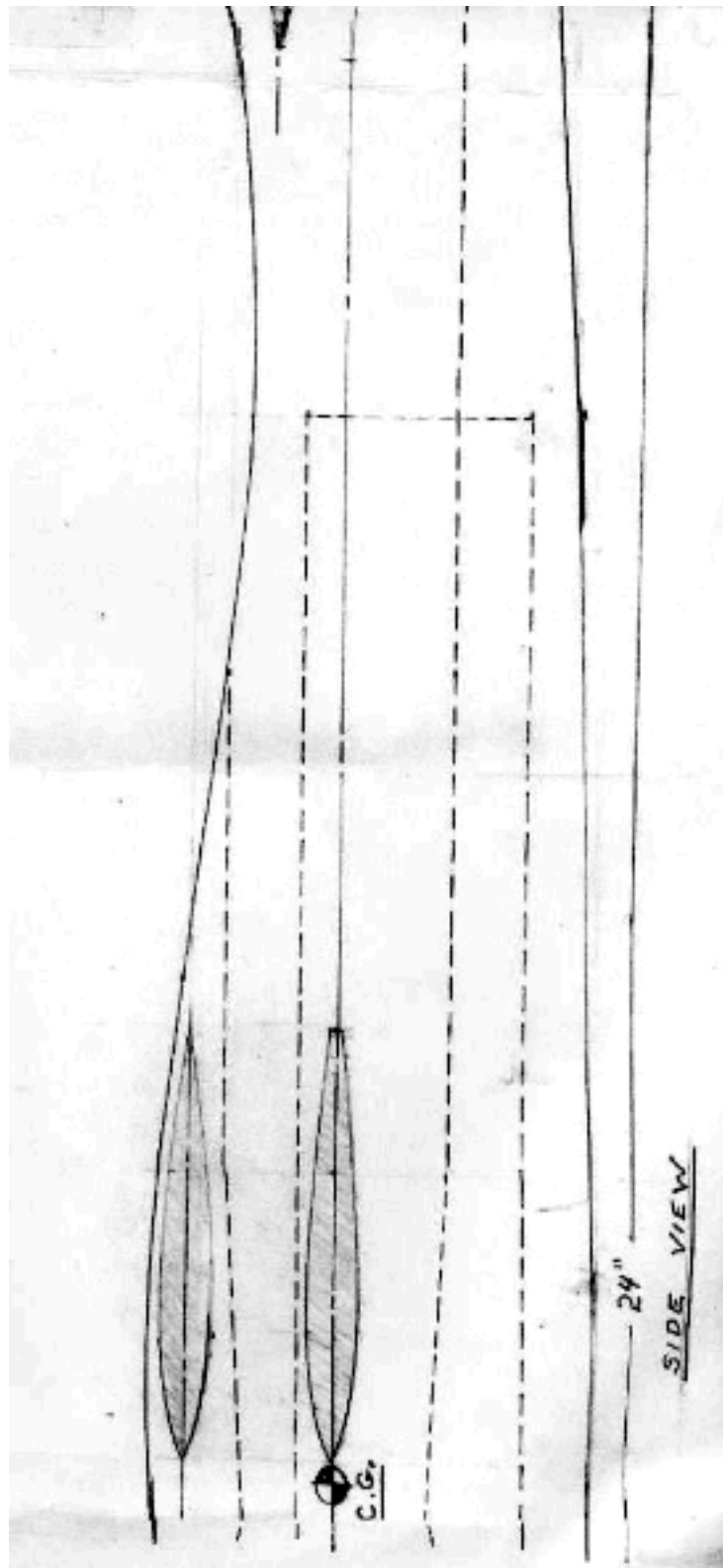
FRONT

LARGE FILLET, EVERYWHERE
 ALL TO GO DOWN TO
 HEAD WITH 2 LAYERS OF 202 FIBER
 TOP VIEW

LINE UP CONTROL UNIT
 WITH LEAD-CUT
 SLOT FOR WING IN
 WING.







FUSELAGE CASE

3" X $\frac{3}{4}$ " X 24" BASSWOOD

$\frac{3}{16}$ " BASSWOOD
RUDER
LIFTING SURFACE ON INSIDE

