

Prop Spinner Chatter



VOLUME 21 ISSUE 12 AMA Charter # 529 Eugene Prop Spinners <http://flyinglines.org> December 2013

Club News and Other Information

Last Club Meeting

November 17, at the Wings Restaurant - Meeting was called to order at 10:45 AM. PRESENT: Mike Denlis, John Thompson, Jim Corbett, Tom Kopriva, Gene Pape, and Jim Mackin.

Discussion of our search for a flying site continued. Mike hopes to talk to Airport Director Tim Doll and to Dave Stockdale at county parks.

Club Flying

None reported in December.

Next Club Meeting

Time and place – **11:00 AM Sunday, December 15, at TJ's Family Restaurant in Creswell.**

President Mike Denlis reports - Thanks to Dave Stockdale, the Senior Parks Analyst for Lane County, it looks like we will be able to use Cinderella Park as a long-term flying site.

There will be a lot more to discuss at the meeting. He has said he would like to attend and then join our inspection field trip. I hope there will be a good group of Prop Spinners for him to meet (with name tags on!).

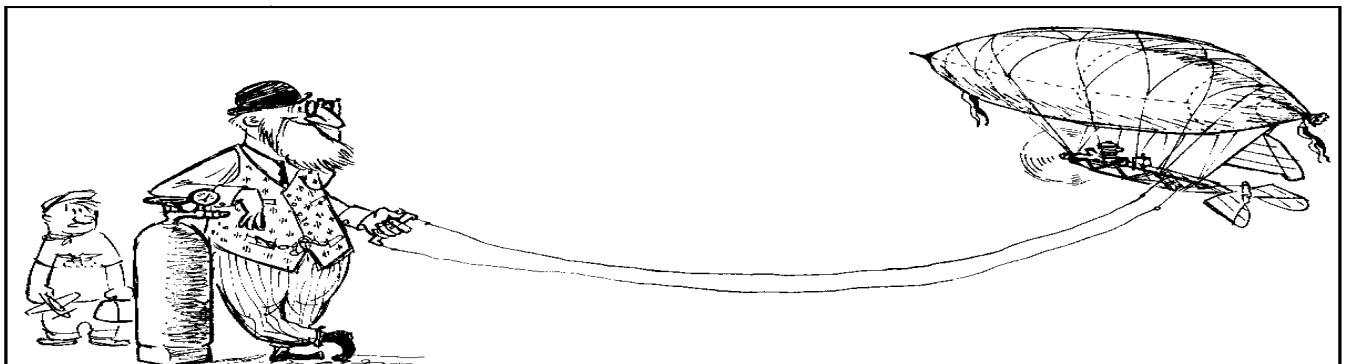
There will be a more formal meeting at the Parks office later on if the Club is satisfied with the site.

So, on December 15th lets plan to meet at 11.00, at TJ's Family Restaurant in Creswell. It is easy to spot at the Southwest quadrant of the I-5 interchange (exit 182), they are expecting us.

FYI - Weather could be cold, so please dress accordingly for the walk through the park.

Dues R Doo!

You can send your \$25 annual dues to the treasurer (John Thompson) or plan to pay at the meeting. The mailing address is John Thompson, 2456 Quince St., Eugene, OR 97404. Donations also are welcome from nonmembers, life members, etc.





EUG Flying site definite closure – November 21. 2013

Dear Mr. Thompson:

In response to your letter dated November 19, I am sorry to inform you but the Eugene Airport will not be able to accommodate CL model aviation any longer.

The airport has experienced two record years of business in a row and is in line to have a third record year.

With the growth in our services, it is necessary to maintain airport property for airport development purposes. I appreciate your understanding and wish you well in locating a new sight for your club activities.

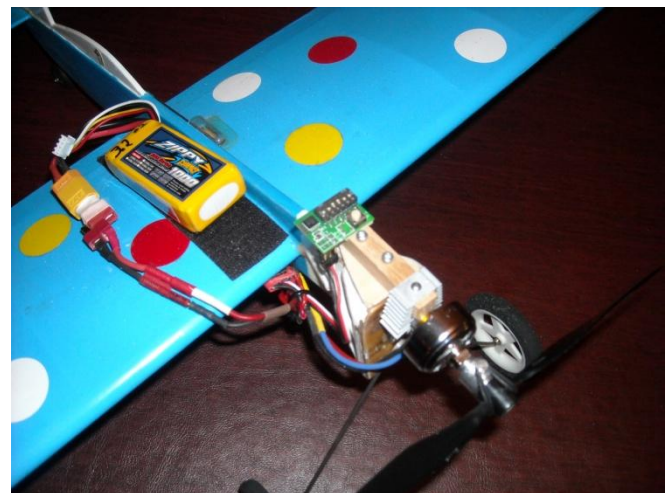
Sincerely,
ss
Timothy Doll, A A E.
Airport Director

Electric Baby Clown - November 18 – Jim Corbett

Gene Pape has his electric clown in the air. So that inspired me to do convert on of my clowns to an electric.

Looking through my collection of brushless electric motors, ESCs and batteries I found something I thought would work on my Baby Clown.

Installed Micro brushless motor, ESC, timer and battery pack



The Baby Clown was built in August of 2007 and flown only twice, it has been sitting since. It had an OLD .049 with attached tank, 6x3 prop and an added ½ oz lead to tail. Dry weight was 8.2 oz.

Electric conversion

Removed .049

Dry weight 8.1 oz (weight with .049 8.2 oz)
Motor, ESC, Timmer weight 2.8 oz

Battery Weights	Props	Amps	Thrust
2s 2.5oz	8x6	9A	7 oz.
2s	8x4.3	7A	8
3s 3.2 oz	8x6	11A	14 oz.
3s	8x4.3	6A	15



Electric Baby Clown - November 18 – Jim Corbett - continued

A 3s1000 3.2 oz. battery pack w/8x4.3 used 364 ma for a 2 minute run. It started out drawing 6.4A, got down to 6.1A at shutdown

The components:

- Motor AX-2308N-1100 Micro brushless motor
Factory Spec.
 Kv: 1100rpm/v
 Lipo Range: 2-3 cell
 Suggested prop: 8x4 ~ 9x5
 Best current range: 6~10A
 Weight: 44g
 Shaft diameter: 3mm
 Stator: 23 x 8mm
 Test Data.
 Battery: 11.5v
 Current: 9.7A
 Propeller: 8x3.8
 Thrust: 550g / 19 oz
 Speed: 8520rpm
- ESC Red Brick ESC 10A
- Timer Ztron Model CLT3, rev 1.0
- Wheels Replaced 1" wheels with 2 1/2" wheels



11.3 oz. RTF weight with 3 cell 1000 mah LiPol battery pack. The extra 3+ oz of weight should help with line tension, but most likely will hurt performance.

Ready to test....

Cinderella Park Info -



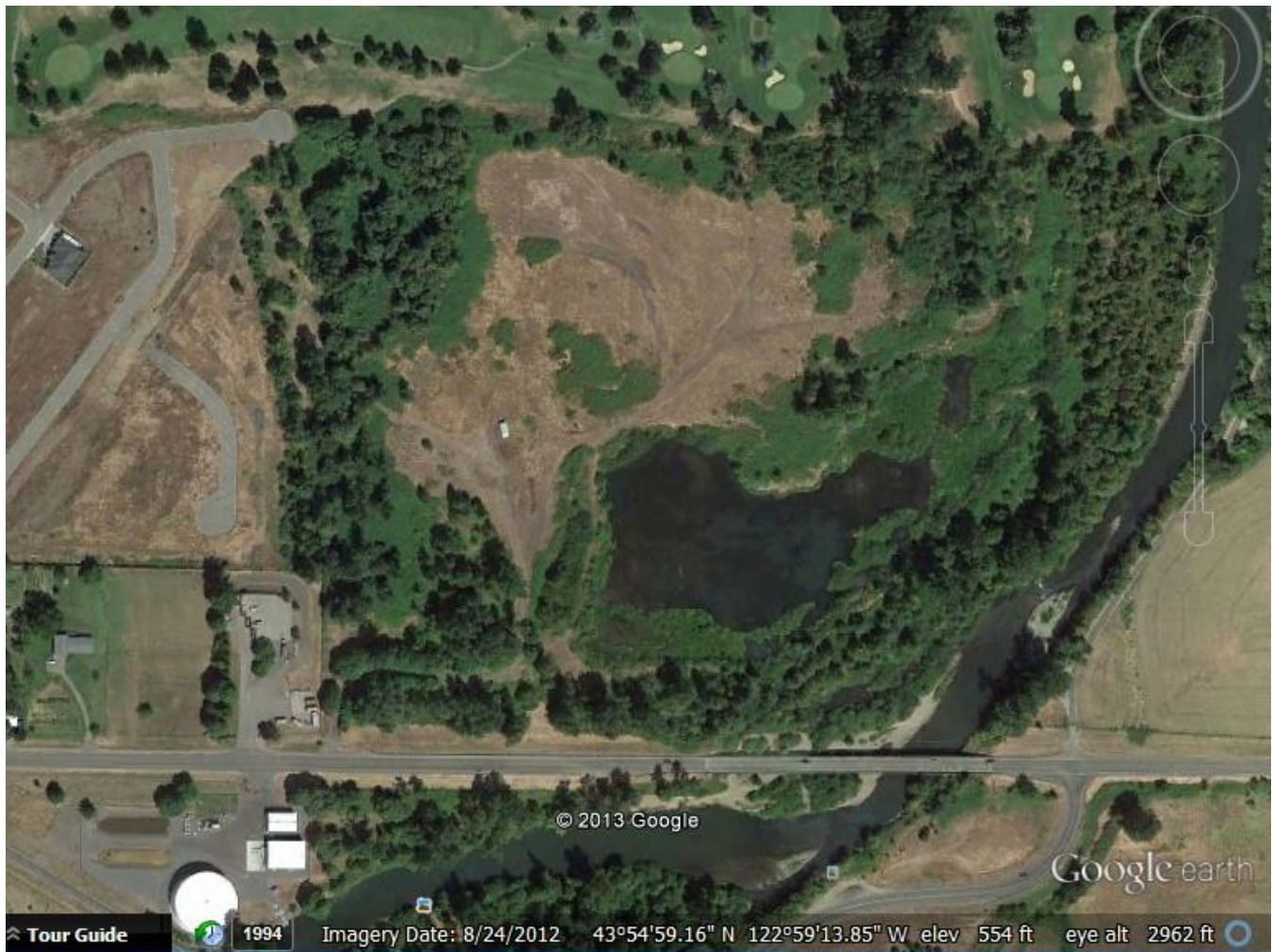
Finding Cinderella Park

Lane County Parks

Cinderella Park: 34293 E. Cloverdale Road, Creswell

From Interstate 5 take exit 182 for Creswell. Turn east onto Oregon Ave/Cloverdale Road. Park is on the left between mileposts 14 and 13 and is currently closed to the public.



**Cinderella Park Info** - Google Satellite photo – August 2012

Some of the history of model aircraft clubs use of Cinderella Park.

Cinderella Park – Timm Wagner Field – Was used by South Lane R/C Modelers Club from the late 1990s until they developed the Mosby Creek Flying Field east of Cottage Grove.

In 1993 South Lane President Timm Wagner located Cinderella Park, it was a former land fill area. A contract was signed allowing the club to develop the site as a model flying site.

In the late 1990's the Mosby Creek Flying Field east of Cottage Grove was developed, and most South Lane members flew there.

In the spring of 2006 the South Lane club lost the use of Cinderella Field due to a dispute between the adjacent property owner and the county. As a result, the county closed the park to everyone. For more info see: <http://www.southlanerc.net/history.php>

Eugene RC Aeronauts shared Cinderella with South Lane RC from October of 2004 until November of 2005 when Eugene RC Aeronauts leased some land near Alavadore for a new RC field.

Rumor has it that the site was a mill, then a land fill and now a closed county park.

Newsletter Editor
1618 Gilham Rd.
Eugene, OR 97401



December 2013

«FirstLast»
«Street»
«CityStZip»

DUES ARE DUE for 2014

You can send your \$25 annual dues to the treasurer or plan to pay them at the meeting.



Upcoming Model Activities

December 15th EPS meeting.

Time and place – **11:00 AM Sunday, December 15, at TJ's Family Restaurant in Creswell.** An update on our field status and long-term future is on the agenda.

Prop Spinner Club officers

Mike Denlis, President
Jim Corbett, VP
John Thompson, Treasurer
Tom Kopriva, Secretary
Mike Massey, Safety Officer
Jim Corbett, Newsletter Editor

Where the Action Is: <http://flyinglines.org/Action.html> **Visit:** <http://flyinglines.org> web site.