

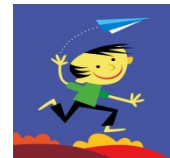
Mission Wings Model Flying Club

The famousness “NS with BS” control line fun-fly is back for the ?th time.

The world famous, **NS with BS** control line fun-fly is back yet again. It will be held on the **10th of June 2018** at the Mission Wings Flying Club located at 10259 Farms Rd. Mission.

Pilots meeting at 9.30am. Flying A.S.A.P. and continues till finished.

All the usual silly antics can be expected. Such as balloon bust, bladder bust, longest flight, and this year, for the first time **Vintage combat**



This year for the first time there will be vintage combat events.

They are being organized by none other than **Greg Davis.**

Contact Greg at...original_greg_of_canada@yahoo.ca for more info.

There could be scale planes. There could be a swap meet, even a buy and sell. Your junk is someone else's treasure. There is no entry fee. All control liners most welcome.

Contest director is Paul Bedford. kiwipaul@telus.net



<https://www.google.ca/maps/place/49%C2%B011'19.1%22N+122%C2%B014'51.8%22W/@49.0145406,-122.2866898,13.75z/data=!4m5!3m4!1s0x0:0x0!8m2!3d49.18865!4d-122.24773?hl=en>

Starting at the Sumas / Huntington border crossing, highway 11 will take you through Abbotsford to Mission. Follow highway 11 to Mission and Highway 7, the Lougheed Highway. Turn right and travel approximately 8 km's . Look for Sylvester Road on your left, Husky gas station on the corner. Follow till you see Farms Rd. There is a large vine covered tree trunk in the middle of the intersection. Avoid the trunk.

Follow Farms road west, which turns right and heads north. After turning north look for a letter box with the name "Doug and Pauline Anderson". This is the entrance to the field.

Follow the club signs. It's a narrow winding dirt track which will lead you to our field.